

# Mirage Q IP

Light Efficiency:

46 Lumen/Watt

Light Quality:

CRI: 65.1

Color Temperature:

1847 K

Output: 439 lm

Peak: 11047 cd

Power: 9.5 W

PF: 1.0



Product Name:  
**Mirage Q IP**

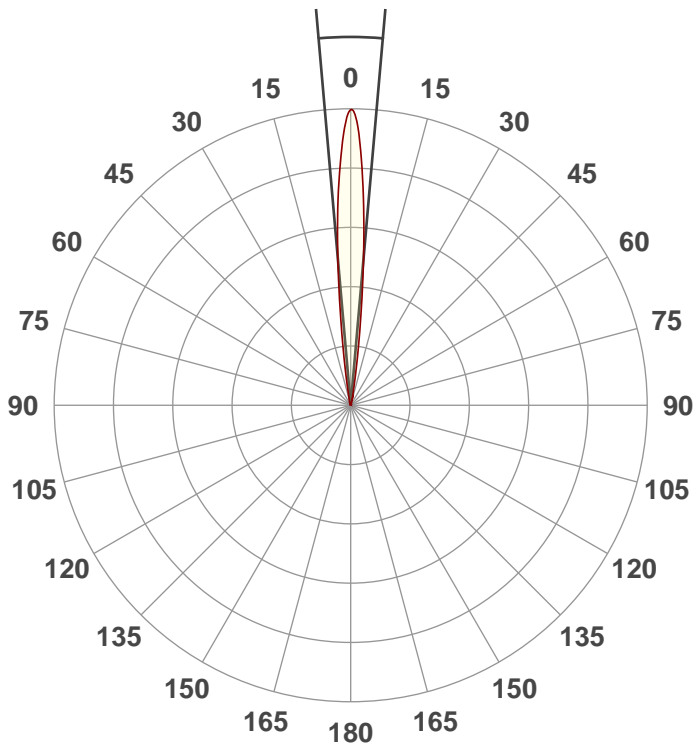
Test:  
**Amber**

Date:  
**5/13/2021**

Note:

Beam Angle

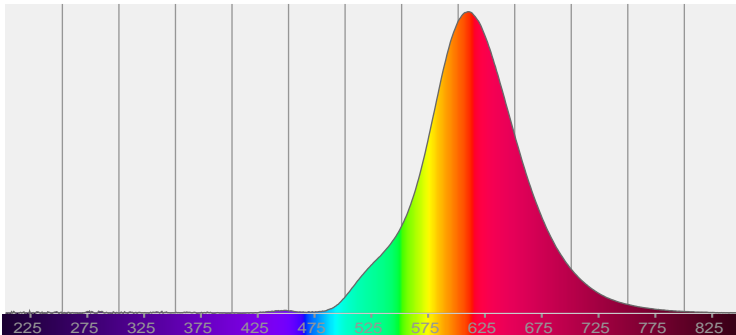
10°



CIE 1931  
x: 0.560  
y: 0.430

Spectra

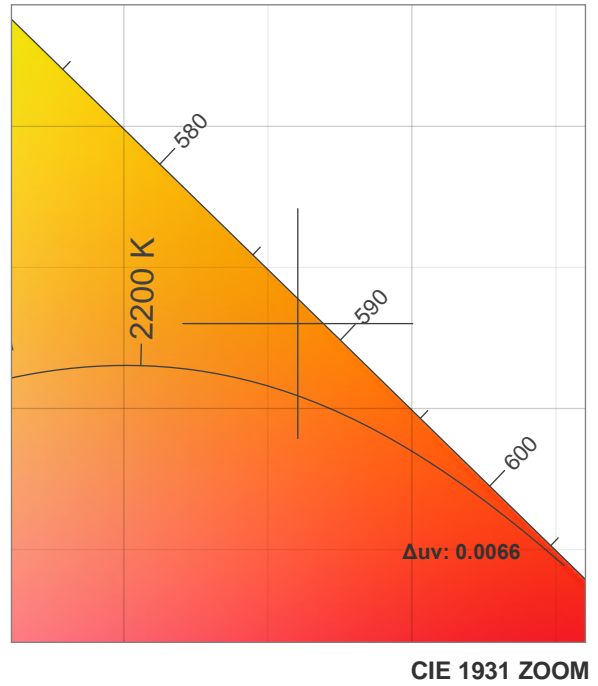
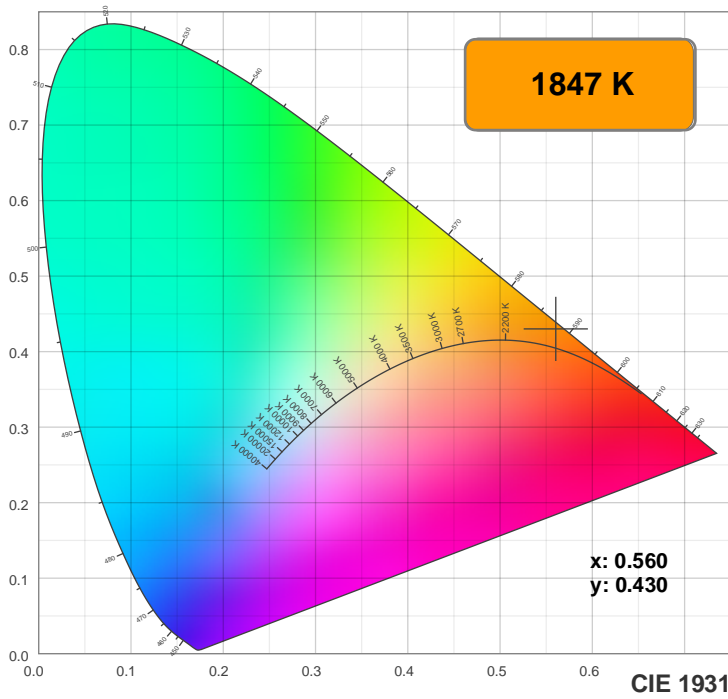
Dominant Wavelength: 589nm



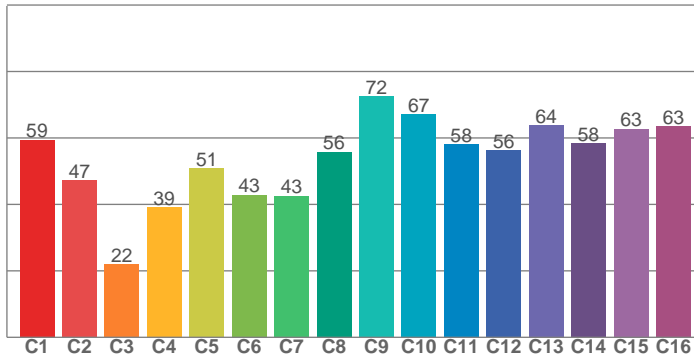
Power

Voltage: 15.0 V  
Current: 0.630 A  
Frequency: 0 Hz

## Color Details



**TM30: 54.0**



**CRI R values, only R1-R8 are used to calculate final CRI value**

R1	R2	R3	R4	R5	R6	R7	R8	R9	R10	R11	R12	R13	R14	R15
60.8	80.5	89.2	55.7	57.5	76.7	71.0	29.1	-43.0	60.7	48.0	49.6	63.6	94.7	49.7

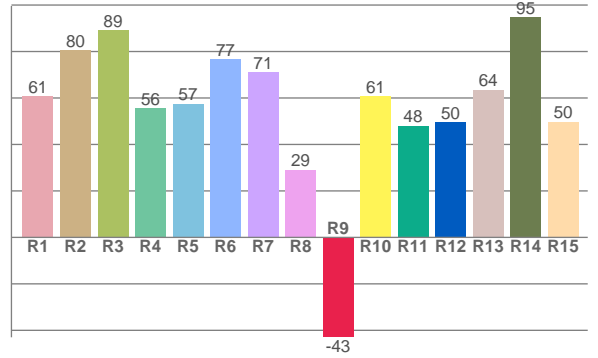
**TM30 C values, 16 binned values out of total of 99 C values**

C1	C2	C3	C4	C5	C6	C7	C8	C9	C10	C11	C12	C13	C14	C15	C16
59.4	47.1	21.9	39.1	50.8	42.9	42.6	55.8	72.4	67.1	58.1	56.2	63.8	58.3	62.7	63.4

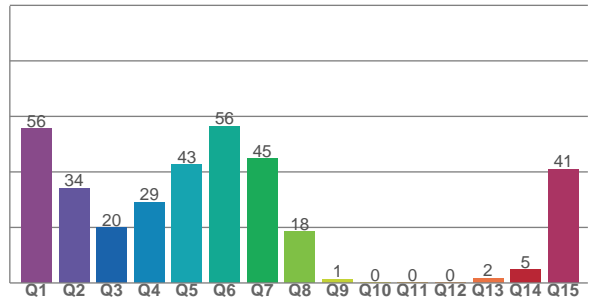
**CQS Q values**

Q1	Q2	Q3	Q4	Q5	Q6	Q7	Q8	Q9	Q10	Q11	Q12	Q13	Q14	Q15
55.6	34.2	19.9	29.0	42.6	56.4	44.7	18.5	1.4	0.0	0.0	0.1	1.7	4.8	41.0

**CRI: 65.1 (R1-R8)**



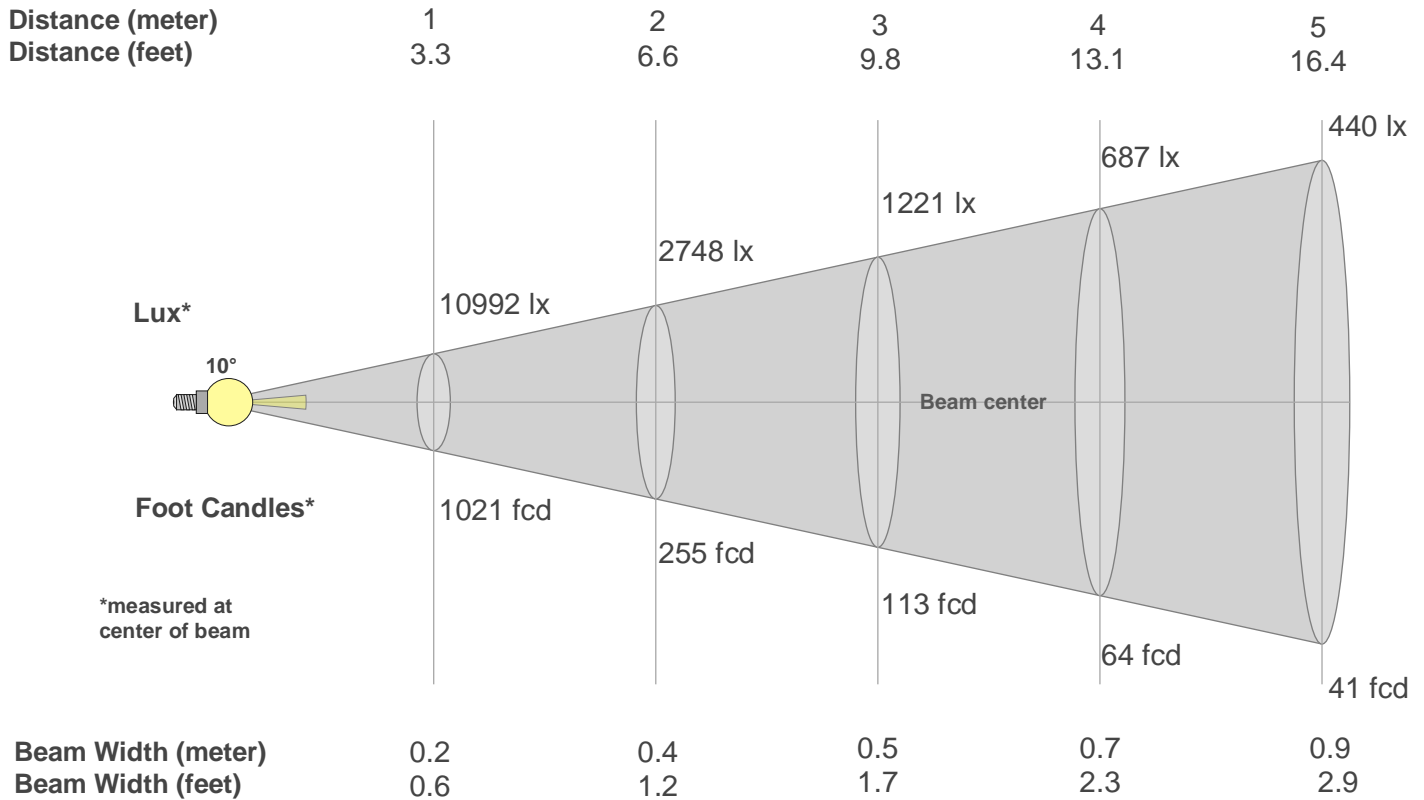
**CQS: 8.2**



## Color Parameters

Color Temperature	Color Rendering Index	Red Component	Color Fidelity	Color Gamut	Color Quality Scale	Color Coordinate CIE 1931	Color Coordinate CIE 1931	Color Coordinate	Color Coordinate	Color Deviation from Black Body
CCT	CRI	CRI R9	TM30 Rf	TM30 Rg	CQS	x	y	u	v	Δuv
1847 K	65.1	-43.0	54.0	45.6	8.2	0.560	0.430	0.318	0.367	0.0066

## Beam Details



Beam Intensities from 1-20m

m	1	2	3	4	5	6	7	8	9	10	11	12	13	14	15	16	17	18	19	20
ft	3.3	6.6	9.8	13.1	16.4	19.7	23	26.2	29.5	32.8	36.1	39.4	42.7	45.9	49.2	52.5	55.8	59.1	62.3	65.6
lx	10992	2748	1221	687	440	305	224	172	136	110	91	76	65	56	49	43	38	34	30	27
fcd	1021.2	255.3	113.5	63.8	40.8	28.4	20.8	16	12.6	10.2	8.4	7.1	6	5.2	4.5	4	3.5	3.2	2.8	2.6

Intensities in 0° C-plane

0°	1°	2°	3°	4°	5°	6°	7°	8°	9°	10°	11°	12°	13°	14°	15°	16°	17°	18°	19°
11.0K	10.6K	9.6K	8.4K	7.0K	5.5K	4.0K	2.8K	1.8K	1.2K	0.7K	0.5K	0.4K	0.3K	0.2K	0.2K	0.2K	0.1K	0.1K	0.1K
100%	96%	87%	76%	64%	50%	37%	25%	16%	10%	7%	4%	3%	3%	2%	2%	1%	1%	1%	1%

Intensities in 90° C-plane

0°	1°	2°	3°	4°	5°	6°	7°	8°	9°	10°	11°	12°	13°	14°	15°	16°	17°	18°	19°
11.0K	10.6K	9.6K	8.4K	7.0K	5.5K	4.0K	2.8K	1.8K	1.2K	0.7K	0.5K	0.4K	0.3K	0.2K	0.2K	0.2K	0.1K	0.1K	0.1K
100%	96%	87%	76%	64%	50%	37%	25%	16%	10%	7%	4%	3%	3%	2%	2%	1%	1%	1%	1%

Intensities in 180° C-plane

0°	1°	2°	3°	4°	5°	6°	7°	8°	9°	10°	11°	12°	13°	14°	15°	16°	17°	18°	19°
11.0K	10.7K	9.8K	8.5K	7.0K	5.5K	4.1K	2.8K	1.8K	1.2K	0.7K	0.5K	0.4K	0.3K	0.2K	0.2K	0.1K	0.1K	0.1K	0.1K
100%	98%	89%	77%	64%	50%	37%	26%	17%	11%	7%	4%	3%	3%	2%	1%	1%	1%	1%	1%

Intensities in 270° C-plane

0°	1°	2°	3°	4°	5°	6°	7°	8°	9°	10°	11°	12°	13°	14°	15°	16°	17°	18°	19°
11.0K	10.7K	9.8K	8.5K	7.0K	5.5K	4.1K	2.8K	1.8K	1.2K	0.7K	0.5K	0.4K	0.3K	0.2K	0.2K	0.1K	0.1K	0.1K	0.1K
100%	98%	89%	77%	64%	50%	37%	26%	17%	11%	7%	4%	3%	3%	2%	1%	1%	1%	1%	1%

Beam Angle 50%	Field Angle 10%	Cutoff Angle 2,5%	Intensity Ratio in 120° Cone	Intensity Ratio in 90° Cone
10°	18.2°	26.2°	100.0%	100.0%